

AFGHAN ADULT MALES

MODEL DESCRIPTION DOCUMENT (MDD)

Version 1.0



MAY 22, 2015

DOCUMENT NUMBER: 15060909-024-5
CONTRACT NUMBER: W900KK-14-C-0025

PREPARED FOR:

U.S. ARMY PEO STRI
ATTN: KEITH NEILSEN
12423 RESEARCH PARKWAY
ORLANDO, FL 32826-3275



PREPARED BY:

DIGNITAS TECHNOLOGIES, LLC
3504 LAKE LYNDIA DR., SUITE 170
ORLANDO, FL 32817

DOCUMENT REVISION HISTORY		
Version	Description	Date
0.1	Draft	01/07/15
1.0	Initial Release	09/11/15

TABLE OF CONTENTS

DOCUMENT REVISION HISTORY	i
TABLE OF FIGURES.....	iii
TABLE OF TABLES.....	iv
1 MODEL OVERVIEW	1
1.1 DESCRIPTION	1
1.2 REFERENCES.....	1
1.3 MODEL VERSION and HISTORY	4
1.4 MODEL SUMMARY	4
1.5 LICENSING/RIGHTS.....	9
2 MODEL ATTRIBUTES	9
2.1 POLYGON ALLOCATION	9
2.2 LEVEL OF DETAIL (LODS)	9
2.3 TEXTURE MAPS	10
2.4 SENSOR VIEWS.....	18
2.5 HEALTH STATES.....	18
2.6 SKELETAL STRUCTURE	18
2.6.1 JOINTS IN THE RIG	18
2.6.2 ATTACH POINTS AND ATTACH MODELS	18
3 ANIMATIONS	19
4 VERIFICATION APPROACH.....	19
4.1 RUNTIME SYSTEMS	19
5 LIMITATIONS	19
6 CONTACT INFORMATION	20

TABLE OF FIGURES

Figure 1 Afghan Adult Male Character Models.....	2
Figure 2 Afghan Adult Male with Bomb Vests Character Models.....	3
Figure 3 Afghan Adult Male 1 Origin on Cartesian X, Y, Z Coordinate System	5
Figure 4 Afghan Adult Male 2 Origin on Cartesian X, Y, Z Coordinate System	6
Figure 5 Afghan Adult Male 3 Origin on Cartesian X, Y, Z Coordinate System	7
Figure 6 Afghan Adult Male 4 Origin on Cartesian X, Y, Z Coordinate System	8
Figure 7 Afghan Adult Male 1 Texture Map.....	10
Figure 8 Afghan Adult Male 1 Normal Map.....	10
Figure 9 Afghan Adult Male 2 Texture Map.....	11
Figure 10 Afghan Adult Male 2 Normal Map	11
Figure 11 Afghan Adult Male 3 Texture Map.....	12
Figure 12 Afghan Adult Male 3 Normal Map.....	12
Figure 13 Afghan Adult Male 4 Texture Map.....	13
Figure 14 Afghan Adult Male 4 Normal Map	13
Figure 15 Afghan Adult Male 1 with Bomb Vest Texture Map	14
Figure 16 Afghan Adult Male 1 with Bomb Vest Normal Map.....	14
Figure 17 Afghan Adult Male 2 with Bomb Vest Texture Map	15
Figure 18 Afghan Adult Male 2 with Bomb Vest Normal Map.....	15
Figure 19 Afghan Adult Male 3 with Bomb Vest Texture Map	16
Figure 20 Afghan Adult Male 3 with Bomb Vest Normal Map.....	16
Figure 21 Afghan Adult Male 4 with Bomb Vest Texture Map	17
Figure 22 Afghan Adult Male 4 with Bomb Vest Normal Map.....	17

TABLE OF TABLES

Table 1 Character Revision History 4

Table 2 Model Summary..... 4

Table 3 Polygon Allocation..... 9

Table 4 Naming Convention for Joints..... 18

Table 5 Attached Models..... 19

1 MODEL OVERVIEW

1.1 DESCRIPTION

This document details the 3-Dimensional (3D) models of Afghan Adult Male characters. The Afghan Adult Male character models can be used with and without weapons and with a set of animations (see the specific weapons and animations Model Description Documents for more information). Weapons are attached and detached from the Afghan Adult Male character models at specific attach points. During runtime weapons are attached and detached to the model by the visualization system that controls the 3D model. These models can be used with any visualization system that can import FBX or COLLADA formats.

The Afghan Adult Male character models were developed by Dignitas Technologies for the SE Core DT Phase III Small Business Innovative Research (SBIR) project. The models were part of a larger set of character and weapon models, and animations developed to support the LVC-IA AAR 3D Viewer. The models designs were based on screen captures of the CCTT DI Guy Afghan Adult Male models provided by SE Core. To meet the LVC-IA AAR performance requirement, a medium fidelity model was developed.

The Afghan Adult Male character model components include:

- Tunic
- Loafers
- Pants
- Hat or Turban

1.2 REFERENCES

- 3D_Model_Development_Process.docx
 - The 3D model development process details Dignitas Technologies' procedure for building 3D characters and animations.
- Character_Model_Specification.docx
 - The character model specification provides the requirements for developing 3D character models and attachments.



Afghan Male 1



Afghan Male 2



Afghan Male 3



Afghan Male 4

Figure 1 Afghan Adult Male Character Models



Afghan Male 1



Afghan Male 2



Afghan Male 3



Afghan Male 4

Figure 2 Afghan Adult Male with Bomb Vests Character Models

1.3 MODEL VERSION AND HISTORY

Information about the model version can be found in the “Model_Version.txt” file located in the model’s directory (same directory the model’s .fbx file is located).

Table 1 Character Revision History

Version	Description	Date
1.0	Initial release of the AfghanAdultMale1_skelmesh.fbx	05/10/15
1.0	Initial release of the AfghanAdultMale1_WithBombVest_skelmesh.fbx	05/10/15
1.0	Initial release of the AfghanAdultMale2_skelmesh.fbx	05/10/15
1.0	Initial release of the AfghanAdultMale2_WithBombVest_skelmesh.fbx	05/10/15
1.0	Initial release of the AfghanAdultMale3_skelmesh.fbx	05/10/15
1.0	Initial release of the AfghanAdultMale3_WithBombVest_skelmesh.fbx	05/10/15
1.0	Initial release of the AfghanAdultMale4_skelmesh.fbx	05/10/15
1.0	Initial release of the AfghanAdultMale4_WithBombVest_skelmesh.fbx	05/10/15

1.4 MODEL SUMMARY

Table 2 Model Summary

Model Name	AfghanAdultMale1_skelmesh.fbx AfghanAdultMale1_WithBombVest_skelmesh.fbx AfghanAdultMale2_skelmesh.fbx AfghanAdultMale2_WithBombVest_skelmesh.fbx AfghanAdultMale3_skelmesh.fbx AfghanAdultMale3_WithBombVest_skelmesh.fbx AfghanAdultMale4_skelmesh.fbx AfghanAdultMale4_WithBombVest_skelmesh.fbx
SE Core MEL Version L ID Afghan Adult Male	862
SE Core MEL Version L ID Afghan Adult Male with Bomb Vest	867
Model Units	Meters
Model Height	2 Meters (units) or 200 Centimeters
Coordinate System	Cartesian X, Y, Z (see Figures 3-6 below)
Model Origin	Origin is located on the ground between the character’s feet. (0, 0, 0) (See figures 3-6 below)
Model Orientation Runtime	Forward: Positive Y Up: Positive Z
Model Orientation Maya	Forward: Positive Z Up: Positive Y



Afghan Adult Male 1



Afghan Adult Male 1 with Bomb Vest

Figure 3 Afghan Adult Male 1 Origin on Cartesian X, Y, Z Coordinate System



Afghan Adult Male 2



Afghan Adult Male 2 with Bomb Vest

Figure 4 Afghan Adult Male 2 Origin on Cartesian X, Y, Z Coordinate System



Afghan Adult Male 3



Afghan Adult Male 3 with Bomb Vest

Figure 5 Afghan Adult Male 3 Origin on Cartesian X, Y, Z Coordinate System



Afghan Adult Male 4



Afghan Adult Male 4 with Bomb Vest

Figure 6 Afghan Adult Male 4 Origin on Cartesian X, Y, Z Coordinate System

1.5 LICENSING/RIGHTS

Models built by Dignitas Technologies along with all files and documentation, have full Government Purpose Rights.

2 MODEL ATTRIBUTES

2.1 POLYGON ALLOCATION

Polygon allocation is the number of triangles and vertices for a given state and Level of Detail (LODs) in the model. The method for calculating the number of polygons is to gather each model state then count the polygons present in each representation. Animations are not included in the polygon allocation. The Afghan Adult Male character models have a single LOD which is labeled LOD0.

Table 3 Polygon Allocation

Model	# of Triangles	# of Vertices
Afghan Adult Male 1	2824	1416
Afghan Adult Male 1 Bomb Vest	2824	1416
Afghan Adult Male 2	2784	1396
Afghan Adult Male 2 Bomb Vest	2784	1396
Afghan Adult Male 3	2824	1416
Afghan Adult Male 3 Bomb Vest	2824	1416
Afghan Adult Male 4	2784	1396
Afghan Adult Male 4 Bomb Vest	2784	1396

2.2 LEVEL OF DETAIL (LODS)

Dignitas supports only one LOD (LOD0) and no switch distances at this time.

2.3 TEXTURE MAPS

Textures:

- AfghanAdultMale1_COL.dds (Diffuse) 2048 x 2048 pixels
- Texture Version: 1.0



Figure 7 Afghan Adult Male 1 Texture Map

- AfghanAdultMale1_NRML.dds (Normal map) 2048 x 2048 pixels
- Texture Version: 1.0



Figure 8 Afghan Adult Male 1 Normal Map

- AfghanAdultMale2_COL.dds (Diffuse) 2048 x 2048 pixels
- Texture Version: 1.0



Figure 9 Afghan Adult Male 2 Texture Map

- AfghanAdultMale2_NRML.dds (Normal map) 2048 x 2048 pixels
- Texture Version: 1.0

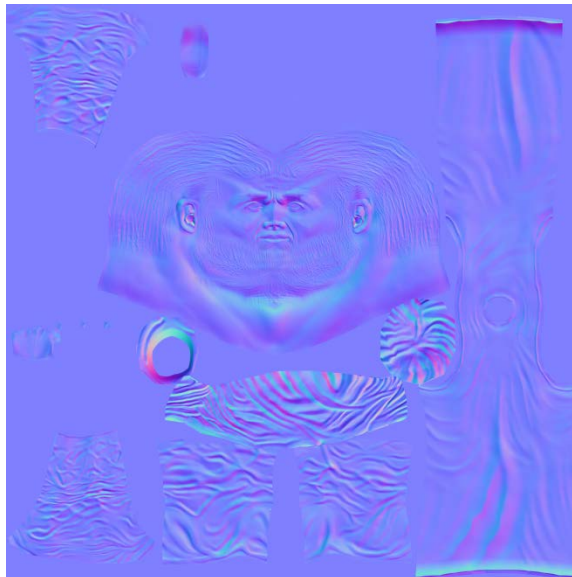


Figure 10 Afghan Adult Male 2 Normal Map

- AfghanAdultMale3_COL.dds (Diffuse) 2048 x 2048 pixels
- Texture Version: 1.0



Figure 11 Afghan Adult Male 3 Texture Map

- AfghanAdultMale3_NRML.dds (Normal map) 2048 x 2048 pixels
- Texture Version: 1.0



Figure 12 Afghan Adult Male 3 Normal Map

- AfghanAdultMale4_COL.dds (Diffuse) 2048 x 2048 pixels
- Texture Version: 1.0



Figure 13 Afghan Adult Male 4 Texture Map

- AfghanAdultMale4_NRML.dds (Normal map) 2048 x 2048 pixels
- Texture Version: 1.0

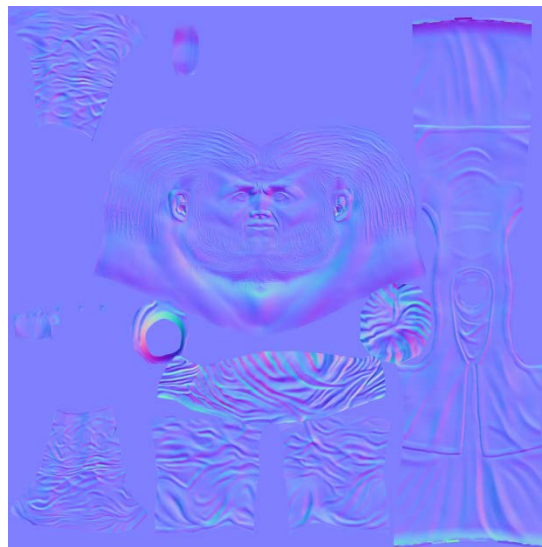


Figure 14 Afghan Adult Male 4 Normal Map

- AfghanAdultMale1_BombVest_COL.dds (Diffuse) 2048 x 2048 pixels
- Texture Version: 1.0



Figure 15 Afghan Adult Male 1 with Bomb Vest Texture Map

- AfghanAdultMale1_BombVest_NRML.dds (Normal map) 2048 x 2048 pixels
- Texture Version: 1.0



Figure 16 Afghan Adult Male 1 with Bomb Vest Normal Map

- AfghanAdultMale2_BombVest_COL.dds (Diffuse) 2048 x 2048 pixels
- Texture Version: 1.0



Figure 17 Afghan Adult Male 2 with Bomb Vest Texture Map

- AfghanAdultMale2_BombVest_NRML.dds (Normal map) 2048 x 2048 pixels
- Texture Version: 1.0



Figure 18 Afghan Adult Male 2 with Bomb Vest Normal Map

- AfghanAdultMale3_BombVest_COL.dds (Diffuse) 2048 x 2048 pixels
- Texture Version: 1.0



Figure 19 Afghan Adult Male 3 with Bomb Vest Texture Map

- AfghanAdultMale3_BombVest_NRML.dds (Normal map) 2048 x 2048 pixels
- Texture Version: 1.0



Figure 20 Afghan Adult Male 3 with Bomb Vest Normal Map

- AfghanAdultMale4_BombVest_COL.dds (Diffuse) 2048 x 2048 pixels
- Texture Version: 1.0



Figure 21 Afghan Adult Male 4 with Bomb Vest Texture Map

- AfghanAdultMale4_BombVest_NRML.dds (Normal map) 2048 x 2048 pixels
- Texture Version: 1.0

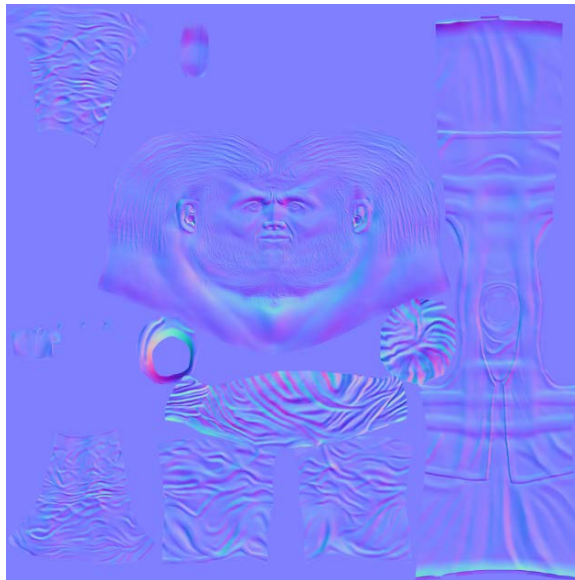


Figure 22 Afghan Adult Male 4 with Bomb Vest Normal Map

2.4 SENSOR VIEWS

Not applicable at this time.

2.5 HEALTH STATES

For more information on the Incapacitated and Killed States refer to their respective MDDs.

Healthy State

Incapacitated State

Killed State

2.6 SKELETAL STRUCTURE

2.6.1 JOINTS IN THE RIG

A **rig** is a skeleton that attaches to the 3D model to allow for animations to be added. The **joints** in the rig hold the translation and rotational data from the animations.

Naming convention for joints:

Table 4 Naming Convention for Joints

Hips	RightForeArm
Spine	RightHand
Spine1	RightThumbBase
Neck	RightThumbTip
Head	RightHandTip
HeadEnd	LeftUpLeg
LeftShoulder	LeftLeg
LeftArm	LeftFoot
LeftForeArm	LeftToeBase
LeftHand	LeftToe
LeftThumbBase	RightUpLeg
LeftThumbTip	RightLeg
LeftHandTip	RightFoot
RightShoulder	RightToeBase
RightArm	RightToe

2.6.2 ATTACH POINTS AND ATTACH MODELS

The model rig and the **Attach Model** (e.g. weapons, cell phones, etc) both have **Attach Points** where they can be connected (“attached”) during runtime. **Attach Points** are unweighted joints on the model rig that represent locations where **Attach Models** can be connected. Attachments occur during runtime

based on the animation applied to the model rig. Table 5 lists all Attach Points, associated Attach Models, and corresponding animations for this character model.

Table 5 Attached Models

Attach Point (on Rig)	Attach Model	Animations
RightHandWeaponAttach	Cell Phone (foregrip)	All stowed animations
RightHandWeaponAttach	Cell Phone (foregrip)	All WeaponFiring animations
RightHandWeaponAttach	Cell Phone (pistolgrip)	Incapacitated and Killed animations

3 ANIMATIONS

The animations associated with this character are shown below. For additional animations compatible with this character, or more information on those listed above, please refer to the Animation MDDs.

- Walking
- Running
- Crawling
- Standing
- Kneeling
- Prone
- Incapacitated
- Crouching
- Killed

4 VERIFICATION APPROACH

4.1 RUNTIME SYSTEMS

This 3D model, associated accessories and weapons, and animations were tested using the following:

- Veritas 3D Viewer v1.13
- Veritas Model Viewer v1.4
- FBX Viewer 2013.3
- OneSAF v8.0

5 LIMITATIONS

Killed state is not implemented yet, however, it is under development.

6 CONTACT INFORMATION

Project Manager: Greg Dukstein

Phone: (407) 601-7847

Email: gdukstein@dignitastech.com